

**Student Leaders:**

**Will you help  
make a  
difference?**

**May 28, 2008**

Offense Data & Prevention Plan  
Office of the State Atty

All young people need  
safe places to go,  
worthwhile things to do,  
a sense of belonging,  
a sense of competence,  
a feeling of hope,  
and relationships with people  
who can help  
make a difference in their lives

Offense Data & Prevention Plan  
Office of the State Atty

## 2007 Juvenile Offense Data and Delinquency Prevention Plan for Alachua County

Presented by:

Office of the State Attorney,  
William Cervone

Gretchen Howard, Project Payback  
[Howardg@sao8.org](mailto:Howardg@sao8.org) 352-337-6174

## 2007 Juvenile Offense Data

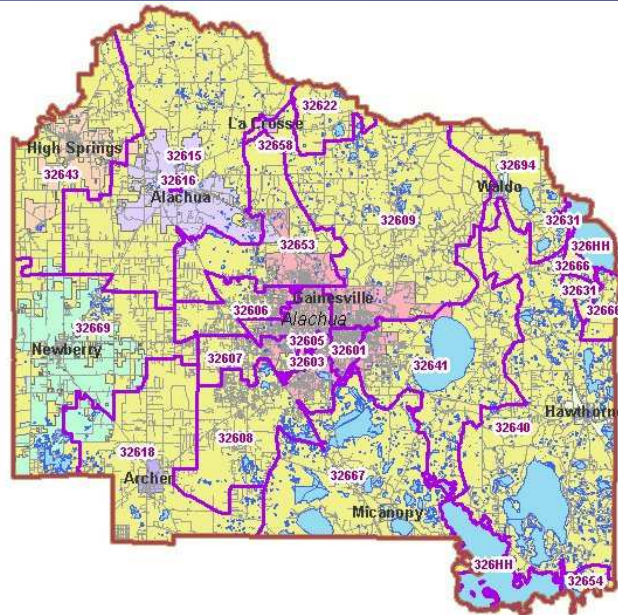
- ✓ Data reflects 2,031\* offenses entered into SAO STAC in which a juvenile committed an offense between January 1 and December 31, 2007 in Alachua county (2,377 offenses in 2006)
- ✓ Total Number of offenses committed by 1,282 youth.
  - ✓ 941 youth were charged with only one offense, (73%)
  - ✓ 335 youth committed 2 or more offenses, (26%)
  - ✓ 6 youth committed 10 or more offenses.

\* The total number of 2006 juvenile offenses were committed by 1,498 juveniles; 1,091 youth were charged with only one offense in 2005, 407 youth committed 2 or more offenses, 8 youth committed 10 or more offenses.

Total Juvenile Offenses, 2007: **2,031**  
 346 fewer offenses than 2006  
 (14.5% reduction)

YEAR	2000	2001	2002	2003	2004	2005	2006
# OF OFFENSES	2,373	2,250	2,308	2,138	2,180	2,150	<b>2,377</b>
CHANGE FROM PREVIOUS YEAR	Not available	-123	+58	-170	+42	-30	<b>+227</b>

Offense Data & Prevention Plan  
 Office of the State Atty



Offense Data & Prevention Plan  
 Office of the State Atty

## Zip code and Offenses

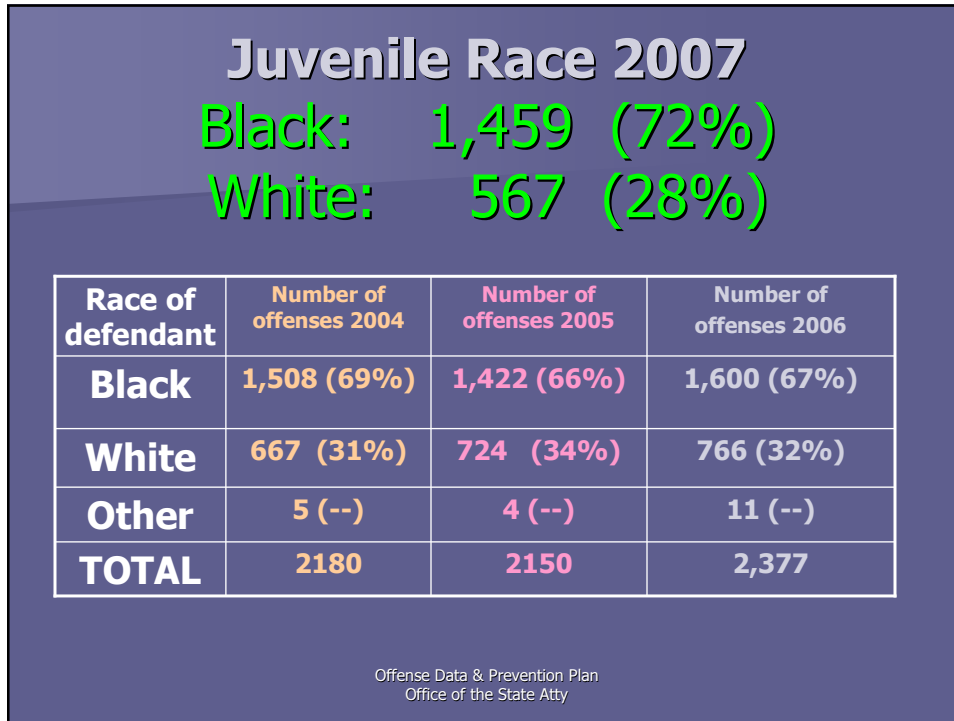
Zip code	# of 2007 Juvenile Offenses
32601	241
32605	98
32606	44
32607	238
32608	154
32609	267
32615	144
32618	49
32640	45
32641	395
32653	63
32669	38

Offense Data & Prevention Plan  
 Office of the State Atty

## 2007 Age and Gender at time of Offense

Def Age:	Female	Male	Total
7-10	7	29	36
11	8	24	32
12	36*	52	88
13	50	144	194
14	85	251	336
15	107	290	397
16	146*	319	465
17	121	359	480*
18	2	1	3
Total	562 28%	1,469 72%	2,031

Offense Data & Prevention Plan  
 Office of the State Atty



- ## Types of Offenses: Categories
- **Property**  
Criminal Mischief, Burglary, Theft (petit, retail, grand), Fraudulent use of credit card, Forgery, Arson, Dealing in stolen property, worthless check
  - **Personal**  
Domestic violence, Robbery, Affray, Battery, Assault, Resisting arrest w/ violence, Kidnapping, Culpable negligence, Attempted carjacking with a weapon
    - **Sex Crime** Sexual Battery, lewd and lascivious, indecent exposure, voyeurism
    - **Gun** Firearm related offense
    - **Dom** Domestic battery or assault
  - **Other**  
Disorderly conduct, Trespassing, loitering, resisting arrest w/o violence, Giving False Information, disrupting a school function, possession of weapon at school, Juvenile escape.
  - **Drug**  
Alcohol or other illegal Drug offense (possession, sale or paraphernalia)
  - **Multiple types of offenses**  
Case involves multiple charges involving a Combination of offenses which include at least one property or one personal offense category

## 2007 Juvenile Offense categories

Type of Offense	Frequency	Percent
<b>Property</b>	<b>787</b>	<b>39%</b>
<b>Domestic*</b>	<b>36</b>	<b>2%</b>
<b>Gun*</b>	<b>15</b>	<b>.7%</b>
<b>Sex*</b>	<b>19</b>	<b>1%</b>
<b>All Other Personal*</b>	<b>549</b>	<b>27%</b>
<b>*Total Personal</b>	<b>619</b>	<b>30.7%</b>
<b>Drug</b>	<b>250</b>	<b>12%</b>
<b>Other</b>	<b>335</b>	<b>16.5%</b>
<b>Combination</b>	<b>40</b>	<b>2%</b>
<b>Total</b>	<b>2,031</b>	<b>100.0</b>

Offense Data & Prevention Plan  
Office of the State Atty

## Time of Day 2007/ 2006

Note: The first category is a six-hour time period.

TIME	FREQUENCY	PERCENT
12:01am – 6:00am	<b>233 / 267</b>	<b>11.5% / 11.2%</b>
6:01am – 9:00am*	<b>181 / 163</b>	<b>9% / 7%</b>
9:01am – noon	<b>265 / 323</b>	<b>13% / 13.5%</b>
12:01pm – 3:00pm	<b>344 / 393</b>	<b>17% / 16.5%</b>
<b>3:01pm – 6:00pm</b>	<b>356 / 471</b>	<b>17.5% / 19.8%</b>
6:01pm – 9:00pm	<b>311 / 385</b>	<b>15.3% / 16.2%</b>
9:01pm – midnight*	<b>341 / 375</b>	<b>16.8% / 15.8%</b>
TOTALS	<b>2377</b>	<b>100%</b>

# Juvenile Delinquency Prevention

Long term: 3-10 years  
Community wide Support  
Building on Protective factors

## Alachua County Vision and Mission

---

**Vision:**

End juvenile delinquency in Alachua County.

**Mission:**

The mission of Alachua County's youth Delinquency prevention partners is to collaborate with and empower organizations and individuals to eliminate Youth Delinquency in our communities through advocacy, education, and training.

Offense Data & Prevention Plan  
Office of the State Atty

## Areas of Our Delinquency Prevention Focus:

- **School Attendance**
- **Teenage pregnancy**
- **Drug/alcohol/substance abuse**
- **Juvenile violence and property crime**
- **Mental Health needs**
- **Academic Success: Tutoring/Mentoring**
- **Other: Parenting skills, Job Skills, recreational/after school programming**

Offense Data & Prevention Plan  
Office of the State Atty

## Who's most at risk of delinquency?

**It is Critical.....Identify kids EARLY**

### **1. Key Indicators...**

**Track and analyze data**

### **2. Address with Appropriate, Early Intervention**

Offense Data & Prevention Plan  
Office of the State Atty



♦ Two 8th grade factors gave students at least a 75% probability of dropping out of school: 1) attending school less than 80% of the time in 8th grade (that is, missing at least 5 weeks of school), and 2) receiving a failing final grade in mathematics and/or English during 8th grade. Of those 8th graders who attended school less than 80% of the time, 78% became high school dropouts. Of those 8th graders who failed mathematics and/or English, 77% dropped out of high school. Importantly, gender, race, age, and test scores did not have the strong predictive power of attendance and course failure.

**Unexcused Absences,  
Frequency and Percentages  
8/20/07 – 5/8/08**

	10 or more Unexcused Absences	20 or more Unexcused Absences
<b>Elementary</b> 1st-5 <sup>th</sup> grade	<b>1,737 (19%)</b>	<b>710 (8%)</b>
<b>Middle</b> 6-8 <sup>th</sup> grade	<b>917 (15%)</b>	<b>488 (8%)</b>
<b>High School</b> 9-12 grade	<b>2,739 (33%)</b>	<b>1,701 (20%)</b>

Offense Data & Prevention Plan  
Office of the State Atty

## Total High School Enrollment: 8440

### Breakdown by high school

students with 10+ absences for the school year  
students with 20+ absences

■ Buchholz:	580 (25%),	319 (14%)
■ Eastside:	767 (33%),	483 (27%)
■ GHS:	530 (27%),	328 (17%)
■ Hawthorne HS:	137 (52%),	98 (37%)
■ Loften	147 (65%),	113 (50%)
■ Newberry:	210 (38%),	143 (26%)
■ Santa Fe:	368 (31%),	217 (18%)

Offense Data & Prevention Plan  
Office of the State Atty

## 2007 Alachua County Dropouts by Grade

- 9<sup>th</sup>: 142
- 10<sup>th</sup>: 220
- 11<sup>th</sup>: 166
- 12<sup>th</sup>: 217

Offense Data & Prevention Plan  
Office of the State Atty



## Ownership and Partners

Goal #2: To increase **social norms** that contribute to equality & respect and safety for men, women, and children.

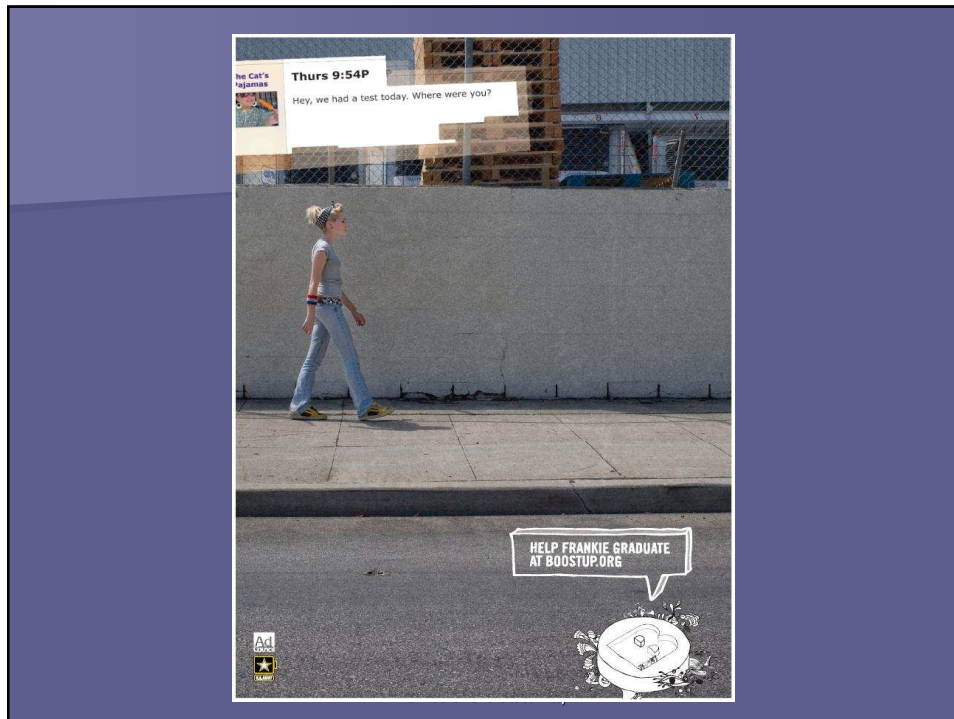
***Social norms*** are expectations of behavior that we set and practice

- Who: Parents, Youth, Faith Based
- What: PS Messages, discussions, actions, practice
- How: Talking, Letters, sharing concerns, Networking, Sermons, solutions

Offense Data & Prevention Plan  
Office of the State Atty

Who:	What:	When:
Neighborhood Block Captains & Parents	Establishing & supporting expectations we hold for parents, youth	1-6 months
School Board		
Ministers/ Churches	Sermons, parent and Youth discussions, bulletin articles	1-6 months
Community Agencies		
<b>High School Leaders, Athletes</b>	<b>Developing and presenting Service Announcements and Presentations to ES and MS on Truancy, pregnancy, recreation</b>	<b>1-6 months SY 2008-09</b>

Offense Data & Prevention Plan  
Office of the State Atty





**"When the issue of preventing  
juvenile delinquency was  
decided... Were you involved?  
Where did you stand?"**

Offense Data & Prevention Plan  
Office of the State Atty